

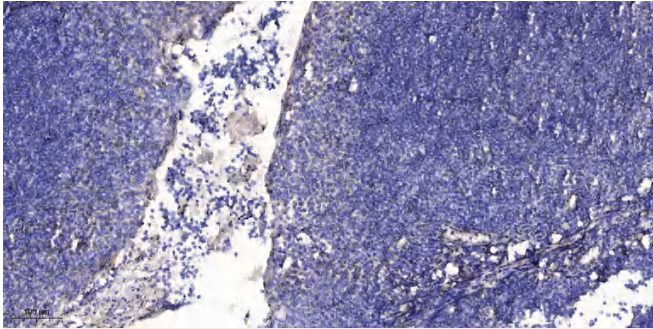


ZnT-2 Polyclonal Antibody

Catalog No	YP-Ab-04278
Isotype	IgG
Reactivity	Human;Rat;Mouse;
Applications	IHC;IF;ELISA
Gene Name	SLC30A2
Protein Name	Zinc transporter 2
Immunogen	The antiserum was produced against synthesized peptide derived from human SLC30A2. AA range:150-200
Specificity	ZnT-2 Polyclonal Antibody detects endogenous levels of ZnT-2 protein.
Formulation	Liquid in PBS containing 50% glycerol, 0.5% BSA and 0.02% sodium azide.
Source	Polyclonal, Rabbit,IgG
Purification	The antibody was affinity-purified from rabbit antiserum by affinity-chromatography using epitope-specific immunogen.
Dilution	IHC: 1/100 - 1/300. ELISA: 1/5000.. IF 1:50-200
Concentration	1 mg/ml
Purity	≥90%
Storage Stability	-20°C/1 year
Synonyms	SLC30A2; ZNT2; Zinc transporter 2; ZnT-2; Solute carrier family 30 member 2
Observed Band	
Cell Pathway	Vacuole membrane ; Multi-pass membrane protein .; [Isoform 2]: Lysosome membrane.
Tissue Specificity	Ovary,Uterus,
Function	transition metal ion transport, ion transport, cation transport, zinc ion transport, metal ion transport, transmembrane transport,
Background	The protein encoded by this gene is a zinc transporter that acts as a homodimer. The encoded protein plays a role in secreting zinc into breast milk. Two transcript variants encoding different isoforms have been found for this gene. [provided by RefSeq, Aug 2015],
matters needing attention	Avoid repeated freezing and thawing!
Usage suggestions	This product can be used in immunological reaction related experiments. For more information, please consult technical personnel.



Products Images



Immunohistochemical analysis of paraffin-embedded human tonsil. 1, Antibody was diluted at 1:200(4° overnight). 2, Tris-EDTA,pH9.0 was used for antigen retrieval. 3,Secondary antibody was diluted at 1:200(room temperature, 30min).